

# LD41



Miniature LED Uplight and Wall Light

Data sheet



Design: PJC Lighting Project: Demelza Hospice Product: LD41 in handrail

Our smallest exterior LED the LD41 is a very tough, compact fitting containing the latest in LED technology. It can be run up to 1.7W, and comes with a choice of beam angles making it suitable for a wide range of applications.

## Key Features

- Minimal bezel and recess depth
- Can be specified with frosted glass for indicator applications, a wide beam works best for this effect
- Machined from a solid billet of stainless steel 316
- No visible fixings. Fixing options include O-rings and a first fix sleeve or bonding directly into the mounting surface
- Integral anti-wicking barrier increases protection against moisture ingress due to incorrect IP rated cable connections
- Not designed for permanent submersion, please use our LD242A
- Available with Switch, 0-10V, DMX, Dali or Mains dimmable drivers



## Specification

Applications



Beam Angles 12°, 31°, 48°, 36° x 12°

LED type 1 x Cree XPG2

Colour temperature 2700K\*\* / 3000K 5000K

	350	500	350	500
Drive Current (mA)	350	500	350	500
LED power* (W)	1.2W	1.7W	1.2W	1.7W
CRI (typical)	93	93	75	75
Forward voltage (V) <sub>100</sub>	3.0V	3.2V	3.0V	3.2V
Delivered lumens** (L <sub>100</sub> )	88	120	107	146
Lumens per circuit watt	73	71	89	86

LED lifetime (to 70% lumen maintenance) 50,000hrs at a max ambient temperature of 35°C (if specifying fitting in ambient temperatures of up to 45°C run at 350mA max, LD41-350)

Materials Machine finish 316 stainless steel

Glass 5mm thick borosilicate

Wiring Comes pre-wired with 2 core 100mm lead, can be specified with up to 10m at extra cost

IP rating IP68 - Not for permanent submersion (for permanent submersion applications use LD242A)

\*LED wattage includes losses associated with using an 85% efficient driver

\*\*2700K lumen output is 12% lower than the 3000K figure listed

4000K lumen output is 14% higher than the 3000K figure listed (80CRI)

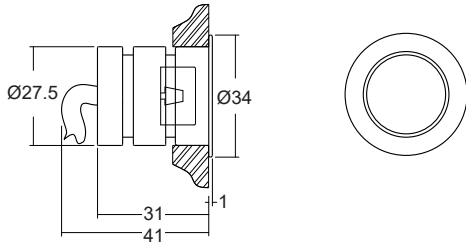
# LD41



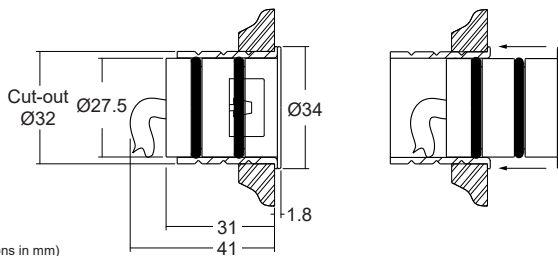
Miniature LED Uplight and Wall Light

Data sheet

## Dimensions and Fixing Options

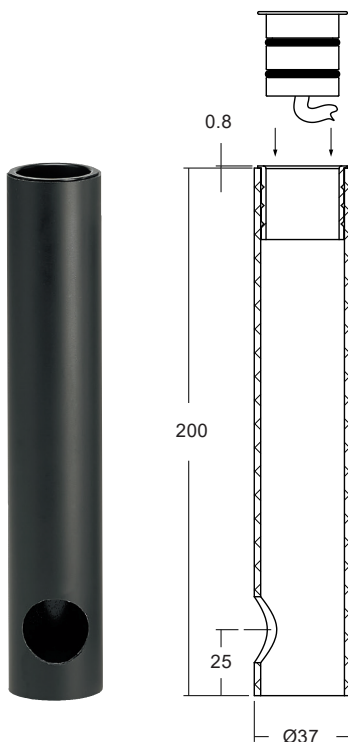


### /480 - O-rings and sleeve



### /480GT - Ground tube

The in-ground tube has been designed for applications where a recessed uplighter is required in soil or gravel surfaces. The tube can be buried with the necessary wiring, and then the fitting installed after the landscaping work has been completed. It is supplied with the fixing sleeve bonded into the tube, and can be cut down on site.



## Photometrics

Photometric files are included in the design pack which can be downloaded from the LD41 product page on the website.

## Order Codes and Options

Product code	LED colour	Lens angle	Finish	Fixing
LD41 - 350 - 500				

Example: LD41-500 / LW30 / MB / Stainless steel / 480

### Product codes with output option

1.2W LED at 350mA	LD41-350
1.7W LED at 500mA	LD41-500

### LED colour options

LED colour options	Suffix
Super Warm White (2200K)	/LW22
Extra Warm White (2700K)	/LW27
Warm White (3000K)	/LW30
White (4000K) - on request	/LW40
Cool White (5000K)	/LW50
Blue	/LB
Green	/LG
Red	/LR
Amber	/LA

\*Other LED colour temperatures are available. Please speak to a member of our sales team.

### Beam / lens angle options

12° narrow spot	/NB
31° medium	/MB
48° wide	/WB
36° x 12° oval	/OB

### Bezel finish options

Stainless steel 316 (standard)  
 Polished stainless steel (passivate for marine / underwater environments)  
 Paint finish white / black / RAL (see finishes guide for suitable applications)

### Fixing options

First fix sleeve and O-rings	/480
Ground tube	/480GT

### Use with 350mA and 500mA constant current LED drivers

We have a wide range of dimmable LED drivers, 1-10V, DMX, DALI and Mains dimmable. Please see the downloads section on our website:  
 To run 1-14 LD41-350 in series use a TXDEL350D (0-10V dimmable)  
 To run 1-14 LD41-500 in series use a TXDEL500D (0-10V dimmable)